



[FREESTANDING](#)

[WALK-IN](#)

[SKIRTED](#)

[MODERN](#)

[CLASSIC](#)

[SHOWER BASE](#)

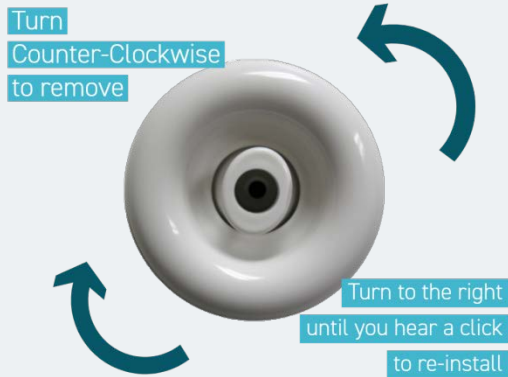


## Did you know how versatile Jetta's jets are?

As part of Jetta's commitment to our partners, we always strive to exceed expectations in all areas of business, and that includes the quality of the parts we use to make our Whirlpool baths. This is why we provide some of the most versatile jets in the industry.

**Top 3 functionalities commonly asked about the jets in our Classic, Designer, Elite, and Walk-in Collections:**

## JETTA JETS CAN BE REMOVED FOR CLEANING

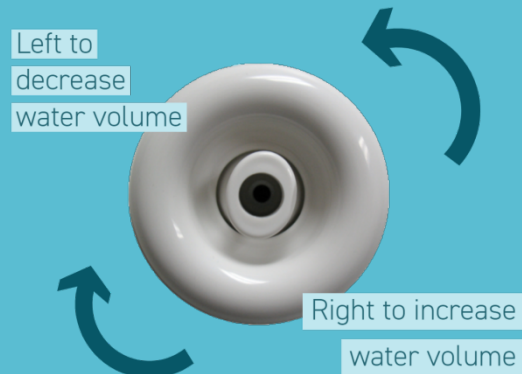


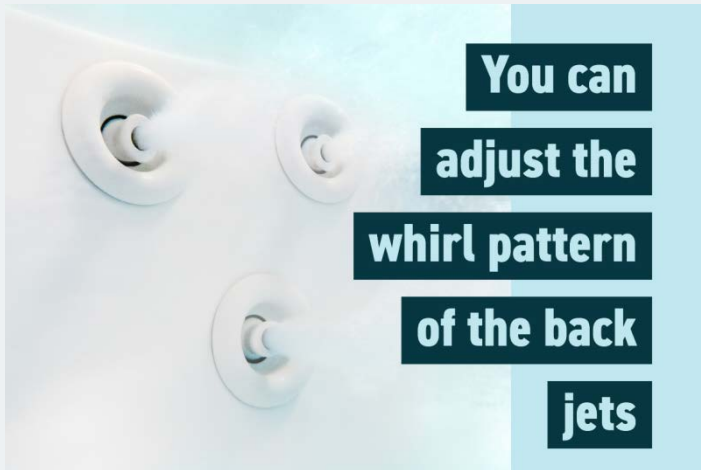
To remove the jets, turn the outer ring counter-clockwise past the point of resistance until you hear a click. Pull the jet straight out to remove. Jets can be placed in the dishwasher on the top rack.

To reinstall the jet, insert the jet body into the housing and turn to the right until you hear a click.

All Elite, Designer, Classic and Walk-In tubs have jets with adjustable water volume control to provide specific intensity to each area of the body. The intensity can be controlled by turning the jet to the right for increased water flow or to the left for decreased water flow. Please note that our Advantage and Affinity lines do not have adjustable water volume jets. The direction of the water can be controlled by moving the directional head in different directions.

## YOU CAN CONTROL THE FLOW AND DIRECTION OF YOUR WATER FROM THE JETS





Jetta Designer and Elite baths come standard with rotational jets at the back of the tub. These jets are designed to disperse water in a whirl pattern. To reduce the whirl pattern, use your finger to adjust the center of the jet nozzle to the center of the jet body. To increase the whirl pattern, move the jet nozzle to the outer ring of the jet body.

Please note that our Classic, Advantage and Affinity lines do not have rotational jets.

OUR MASTER LIST PRICE  
BOOK PRICES WILL BE EFFECTIVE  
UNTIL 12/31/2019