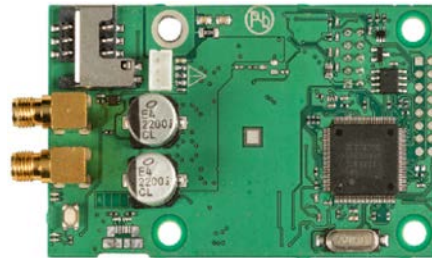


## New CIM 280 GRM 3G/4G Module

Grundfos Partners,

We are pleased to announce the release of a new product within the CIM/CIU product range: the CIM 280 GiC/GRM 3G/4G.



This new CIM 280 module supports 3G/4G technology. The CIM 280 has a built-in modem and is powered from the connected Grundfos device. Currently, the CIM 280 is supported only on AT&T networks (Verizon will be added in the future); therefore, all current GRM data plans are based on the AT&T network.

### Accessories for the CIM 280

The CIM 280 utilizes LTE connection, so for best signal strength and reliability, Grundfos is now stocking and selling an LTE antenna to work with this module. This antenna is flush mount and contains a 3M sticky-back to ensure proper seal.



For external mounting applications, Grundfos stocks and sells an external mounting bracket for our LTE antenna.



### Updated GRM/GiC pricing plans for CIM 280

The CIM 280 uses far less data than previous GRM kits, therefore, Grundfos GRM data plans have been updated to



reflect the lower cost associated with lower data consumption. All data plans are currently AT&T network based.

CIM 280 use with CIU 900 or CIU 901

If the CIM 280 application requires to be mounted within a CIU module, two new additions to the CIU product line, the CIU 900 and/or CIU 901 (CIU units without CIM modules) are made available and must be ordered together with the CIM 280 and any other accessories (antenna, battery, etc.).



	CIM 280	"CIU 280"	"CIU 281"
<b>CIM 280 - US 3G/4G Cellular</b>	X	+ CIU 900	+ CIU 901

#### Product Numbers

The relevant range of CIM/CIU products and accessories can be ordered on below product numbers:

<b>GRM/GiC Modules for: Dedicated Controls (CU362), BoosterpaQ (CU352), Magna3, Hydro Multi-E (Model H/I/J 2), Hydro Multi-B, E-Pump MGE (Model H/I/J 11-22kW), CIU900, CIU901</b>	
<b>DESCRIPTION</b>	<b>MODEL NUMBER</b>
CIM 280: US GRM/GiC for Cellular 3G/4G (Integrated Modem)	99439725

<b>GRM Accessories and CIU 90x Boxes</b>	
<b>DESCRIPTION</b>	<b>MODEL NUMBER</b>
CIU900: CIU Box ONLY, No CIM module installed, unit DOES NOT contain I/O board	99448387
CIU901: CIU Box ONLY, No CIM module installed, unit CONTAINS I/O board	99448389
Battery for CIM280 - for power loss to CIU	99499908
3G/4G GRM Antenna, 3m cable, flush mount (ext mounting bracket sold separately)	99606613
3G/4G GRM External mounting bracket for use with 3G/4G Antenna	99606614
3G/4G High Gain Directional Antenna w/mount and 25' cable	98851149

### GRM Data Plans (Required for GRM Access)

DESCRIPTION	MODEL NUMBER
1-year of GRM CELLULAR based service (for use with CIM 280)	99594769
5-years of GRM CELLULAR based service (for use with CIM 280)	99594770

### Grundfos Product Center Product Information

DOCUMENTATION	DESCRIPTOION
<a href="#">CIM 280 Product Information</a>	- I&O Manual - Brochure
Service	- No spare parts, please order normal CIM CIU interfaces - Firmware update of CIM 280 via Flash programmer or remotely via GRM

### REPLACEMENT

- CIM 280 can be used to replace the following GRM kits:

DESCRIPTION	MODEL NUMBER
3G/4G VERIZON GRM Kit (COMPLETE KIT)	98851292
3G/4G VERIZON GRM Kit (NO ANTENNA)	98851270
3G/4G AT&T GRM Kit (COMPLETE KIT)	99016253
3G/4G AT&T GRM Kit (NO ANTENNA)	99016254

- CIM 280 and CIU 901 can be used to replace the following GRM kits

DESCRIPTION	MODEL NUMBER
3G/4G VERIZON GRM Kit (COMPLETE KIT) - Incl. CIU Module	99034271
3G/4G VERIZON GRM Kit (NO ANTENNA) - Incl. CIU Module	99034270
3G/4G AT&T GRM Kit (COMPLETE KIT) - Incl. CIU Module	99034272
3G/4G AT&T GRM Kit (NO ANTENNA) - Incl. CIU Module	99034283

Sincerely,  
Grundfos Pumps Corporation

be think innovate